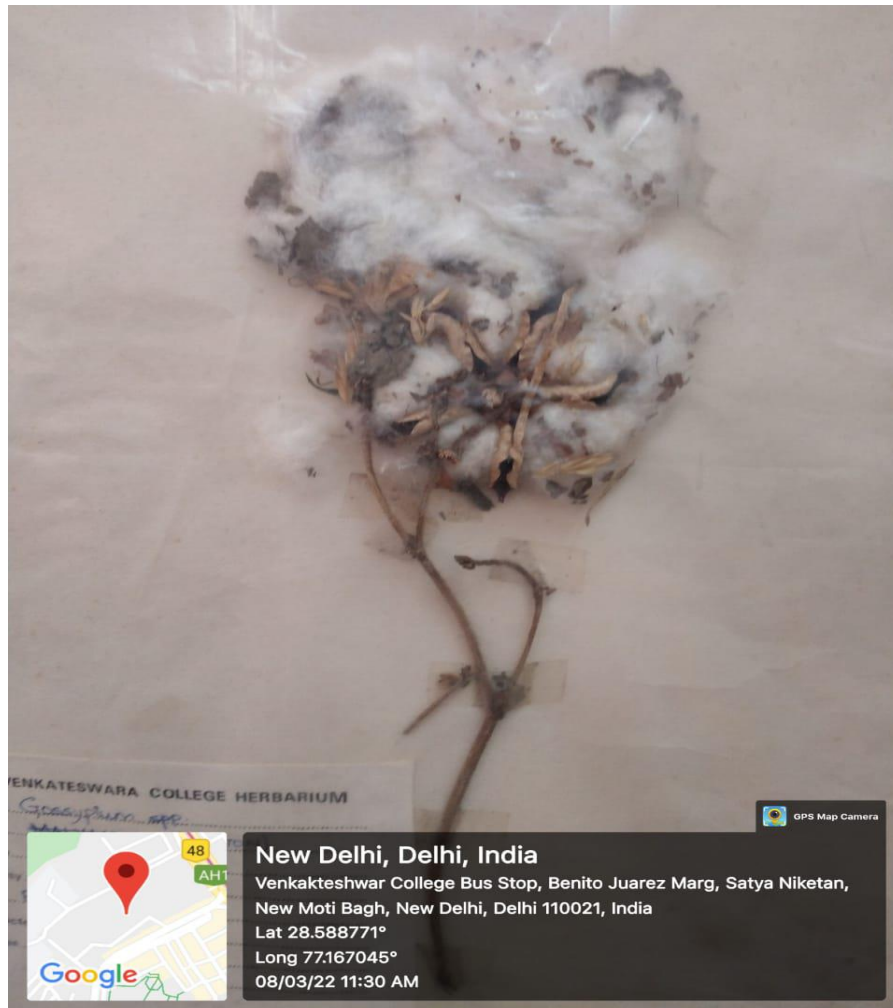


Gossypium spp.



Common Name: Cotton

Scientific Name: *Gossypium* spp.

Family: Malvaceae

Cotton is native to tropical and subtropical regions of the Old and New Worlds. Cultivated cotton are perennial shrubs, most often grown as annuals. Plants are 1–2 m high in modern cropping systems, sometimes higher in traditional, multiannual cropping systems, now largely disappearing. The leaves are broad and lobed, with three to five (or rarely seven) lobes. The seeds are contained in a capsule called a 'boll'; each seed surrounded by fibres.

Economically Important Part: Seed, seed coat fibres

Economic Importance: Fibres are the more commercially interesting part of the plant and they are separated from the seed by a process called ginning. Cottonseed oil is derived from the seeds of various species of *Gossypium*.